

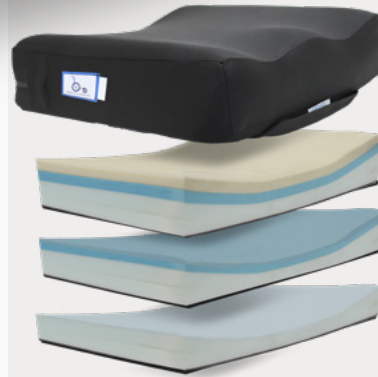
COMFY CUSHION



RELAX SERIES



Waterproof zipper seals in the cushion and prevents fluids from entering inside of the cover.



Comfy Cushion Layered

The **Relax Comfy cushion** provides even pressure distribution over weight bearing surfaces. For individuals with progressive postural change the Comfy cushion will allow for even pressure relief. The waterfall front edge of the cushion will accommodate foot propulsion or tight hamstrings. An increased open pelvic support area allows for greater distribution of pressure and greater pelvic support.

Quick Reference Guide

RELAX SERIES - COMFY CUSHION

REGULAR SIZES ADP: **SESWM0030**

Width = 14" - 20"

Part Number: Refer below

Length = 14" - 20"

PART NUMBERS

Part Number: RC(W X L)

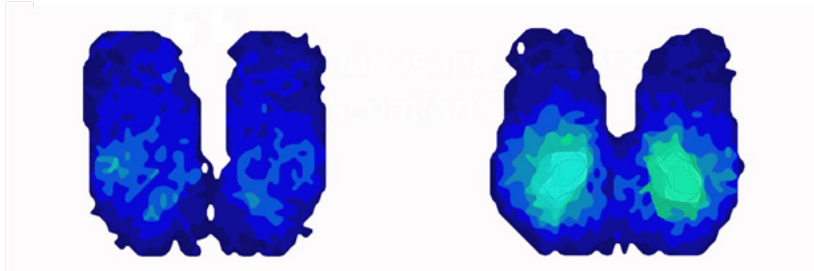
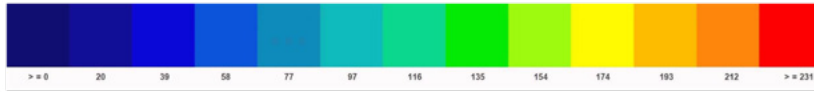
Fill in width (W) and length (L) to get part number.

E.g. For a W = 15 and L = 17 Cushion; Part number would be RC1517

COVER OPTIONS

Part Number	Description	ADP Codes
RC-COV	Standard Cover	SESD1050

Pressure Reading Scale in mm-Hg



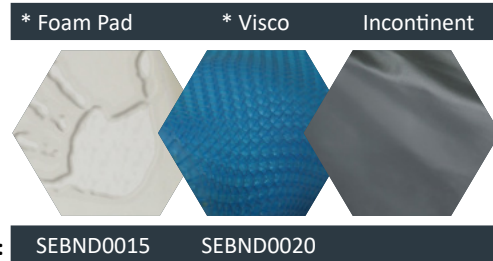
Pressure Map	Relax Comfy
Duration	1 hr
Weight	125 lbs./57 Kg
Average Pressure	30 mm-Hg

Pressure Map	Relax Comfy
Duration	1 hr
Weight	200 lbs./57 Kg
Average Pressure	30 mm-Hg

CUSTOMIZE ANYTHING

Power Plus Mobility's advanced machinery specializes in manufacturing custom parts to customers' specifications from either a drawing or a sample. The parts we manufacture can be simple or more complex and can be manufactured in small or large quantities. Contact your local sales representative with your specifications.

OVERLAYS



* Up-charge items

KEY FEATURES

- Multiple layers of foam density allows for comfortable pelvic support and pressure relief
- Water Fall Front for Thigh Support and Comfort
- Abductor for Comfort and Proper Thigh Positioning
- Incontinent Inner Cover
- Easy Clean, Incontinent, Four Way Stretch Outer Cover

SPECIFICATIONS	RELAX SERIES - COMFY CUSHION
ADP	SESWM0030
PRODUCT WEIGHT	3.5 lbs. (16" x 18")
WIDTH	14" - 20"
DEPTH	14" - 20"
HEIGHT	3.5"
WEIGHT CAPACITY	250 lbs.