

# RELAX SERIES

## RELAX

### GENTLE FIT BACK



**MSRP: \$657**



The Relax Gentle Fit with mild laterals is suited for users needing moderate mid-line support. Provides 10" of lower Thoracic support.

#### Quick Reference Guide

RELAX SERIES - GENTLE FIT BACK	
<b>STANDARD</b> ADP: <b>SEBWM0020</b>	<b>CUSTOM SIZES</b> ADP: <b>SEBWM0025</b>
Height: 18" Width: 16" & 18"	Height: All except 18" Width: All except 16" & 18"

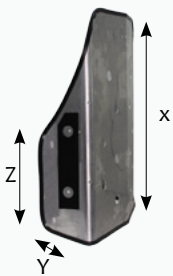
Part Number: Refer below

#### PART NUMBERS

SUB(W X H) **Gentle Laterals**

Fill in width (W) and height (H) to get part number.

E.g. For a W = 15" and H = 17" Back; Part number would be SUB1517



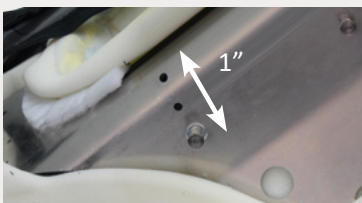
X = Standard shell height 18"  
 Y= Lateral depth 3" finished  
 Z= Lateral height 10"



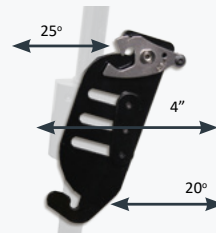
Rear Back Angle



Inner Foam and Incontinent Cover



Reposition pin hardware back by 1" on the shell.  
 Optional 1" longer pins to mount a smaller back on a wider chair



Accommodates Pelvic rotation and will allow for full back support with 25° of posterior and 20° of anterior adjustability.

### KEY FEATURES

- Provides moderate midline support
- Comfortable High Resilience Foam
- 3 lbs. Aluminum, Light Weight Shell
- Pre Punched holes to mount headrest and laterals
- Adjustable/Removable Lumbar Support
- Easy to Install and Remove
- Height Adjustable
- Suited for freedom support
- TEK4 Waerproof material at the bottom of back for easy clean up

### OVERLAYS

* Foam Pad	* Visco	* Gel
ADP: SEBND0015	ADP: SEBND0015	ADP: SEBND0020

\* Up-charge items

SPECIFICATIONS	RELAX SERIES - GENTLE FIT BACK
ADP	<b>SEBWM0020 &amp; SEBWM0025</b>
WIDTH RANGE	Unlimited
HEIGHT	Unlimited
AVAILABLE HARDWARE STYLES	One style which is universal to all our backs
ANGLE ADJUSTABLE	25° anterior adjustability, 20° of posterior adjustability
WIDTH ADJUSTABLE	2" of adjustability through the pins on the back
FITS TUBING SIZE	7/8" tubing or 1"
HEADREST MOUNT	Backs pre-drilled for headrest supports and lateral supports
FINISHED HEIGHT	Back Shell Size +2"