

# RELAX SERIES

## RELAX

## FULL FORM BACK



MSRP: \$990



The Relax Full Foam Back with its very aggressive laterals is suited for users needing complex postural support and spinal alignment. This back is suited for complex seating and positioning needs. Cubes are removable to custom fit for spinal anomalies.

### Quick Reference Guide

RELAX SERIES - FULL FORM BACK		
<b>STANDARD</b> ADP: <b>SEBWM0026</b>	<b>CUSTOM WIDTH</b> ADP: <b>SEBWM0026 &amp; SEBWM0035</b>	<b>CUSTOM HEIGHT</b> ADP: <b>SEBWM0026 &amp; SEBWM0040</b>
Height: 18" Width: 16" & 18"	Height: 18" Width: All except 16" & 18"	Height: All except 18" Width: 16" & 18"
Available Heights: 16", 18" & 20"		

**CUSTOM**  
ADP: **SEBWM0026** W= **SEBWM0035** & H= **SEBWM0040**  
Part Number: Refer below

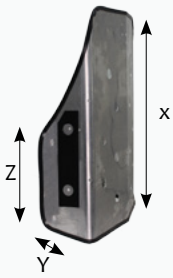
**PART NUMBERS**

SHUD (W X H) **Full Laterals**  
Fill in width (W) and height (H) to get part number.

E.g. For a W = 15" and H = 17" Back; Part number would be SHU1517

### Poly Foam Cubes Part Numbers:

QUB2x2	Poly Foam Cubes 2x2
QUB3x2	Poly Foam Cubes 3x2



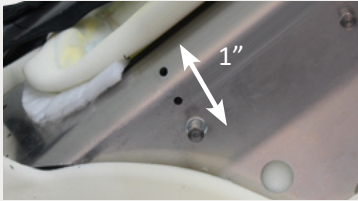
X = Standard shell height 18"  
 Y= Lateral depth 3" finished  
 Z= Lateral height 10"



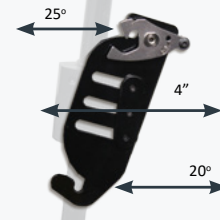
Rear Back Angle



Removable Cube Foam



Reposition pin hardware back by 1" on the shell.  
 Optional 1" longer pins to mount a smaller back on a wider chair



Accommodates Pelvic rotation and will allow for full back support with 25° of posterior and 20° of anterior adjustability.

**KEY FEATURES**

- Wide range of laterals with removable cubes for custom fit
- Comfortable High Resilience Foam
- 3 lbs. Aluminum, Light Weight Shell
- Pre Punched holes to mount headrest and laterals
- Adjustable/Removable Lumbar Support
- Easy to Install and Remove
- Height Adjustable
- TEK4 Waerproof material at the bottom of back for easy clean up

**OVERLAYS**

* Foam Pad	* Visco	* Gel
ADP: SEBND0015	SEBND0015	SEBND0020

\* Up-charge items

SPECIFICATIONS	RELAX SERIES - FORM FIT BACK
ADP	<b>SEBWM0026 W= SEBWM0035 &amp; H= SEBWM0040</b>
STANDARD WIDTH RANGE	16" - 18"
CUSTOM WIDTH RANGE	15" or less and 19" or more
STANDARD HEIGHT RANGE	18"
CUSTOM HEIGHT RANGE	17" or less and 19" or more
AVAILABLE HARDWARE STYLES	One style which is universal to all our backs
ANGLE ADJUSTABLE	25° anterior adjustability, 20° of posterior adjustability
WIDTH ADJUSTABLE	2" of adjustability through the pins on the back
FITS TUBING SIZE	7/8" tubing or 1"
HEADREST MOUNT	Backs pre-drilled for headrest supports and lateral supports
FINISHED HEIGHT	Back Shell Size +2"