

SEATING BOOKLET

SIT BACK AND RELAX



BACKS



CUSHIONS



ACCESSORIES

QUALITY
INTEGRITY
EXPERIENCE



PROUDLY CANADIAN

We are always proud to tell our customers that the products we produce are all made in Canada. Not only does this allow us to enhance and innovate our products more quickly and efficiently, it produces many jobs for hard working Canadians. With the business you give us, we are able to continually provide jobs and in return our products help you in ways that break down boundaries that once were in place. Its a “win win” and that just further solidifies for us to always make products closer to home. From the very beginning we started with the design and assembly of our products done right in Canada and that process has never changed. We are so humble to know that we can help create jobs for fellow Canadians while also providing wheelchairs that help you. Through that we want to thank you for supporting companies like us who believe in local work rather than outsourcing and allowing us to say Power Plus Mobility creates products Made in Canada!



Our Seating and Fabrication Specialists

INDEX

BACKS

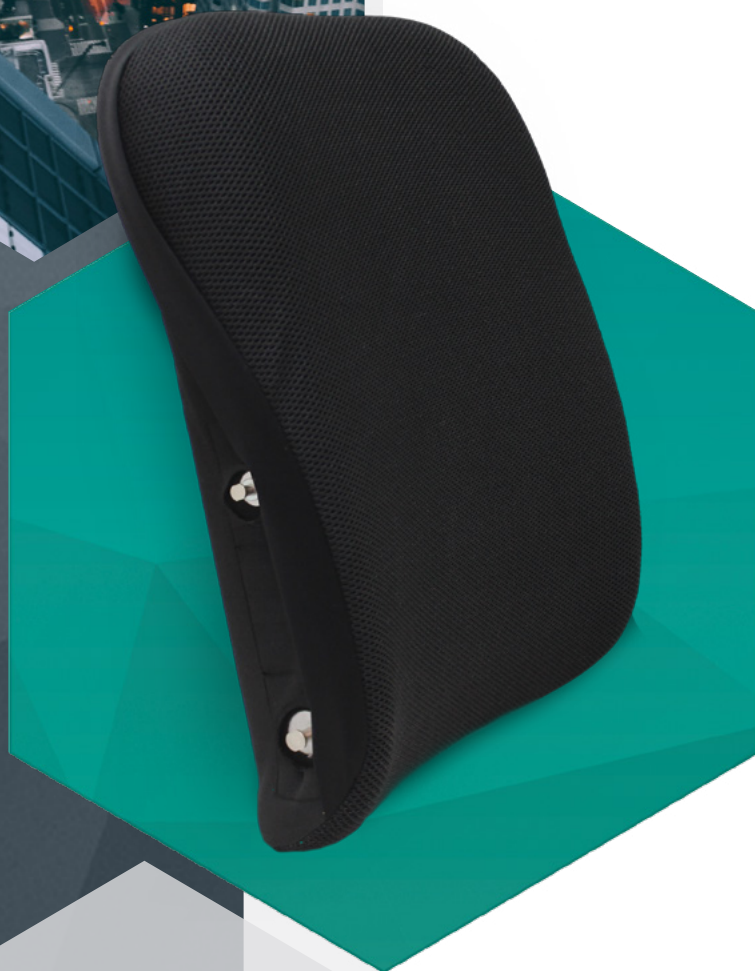
GENTLE FIT BACK	04
FULL FIT BACK	06
SNUG FIT BACK	08
FORM FIT BACK	10
SPIRAL FIT BACK	12

CUSHIONS

SOFT CUSHION	14
COMFY CUSHION	16
FIRM CUSHION	18

ACCESSORIES

HEADRESTS	20
LATERAL/ SHOULDER SUPPORTS	21
ARM SUPPORTS	22
LAP TRAYS	23
DROPBASE AND RIGIDIZER	24
POSITIONING BELTS	25
FOOTBOX OPTIONS	26
TENSION BACK UPHOLSTERY	27
SEAT POSITIONING DEVICES	28



Rear Back Angle



Inner Foam and Incontinent Cover

The **Relax Gentle Fit** by Power Plus Mobility is designed to meet a variety of positioning needs. This is an aluminum light weight back with hardware that allows for multiple adjustments. The Relax Gentle Fit with mild laterals is suited for users needing moderate mid-line support. Provides 10" of lower Thoracic support.

Quick Reference Guide

RELAX SERIES - GENTLE FIT BACK

REGULAR SIZES ADP: **SEBWM0020**

Width = 14" to 18", 20"

Part Number: Refer below

Height = 18"

CUSTOM SIZES ADP: **SEBWM0025**

Width = 13" or < and 19", 21" or >

Part Number: Refer below

Height = are 17" or <, 19" or >

"<" means less and ">" means more

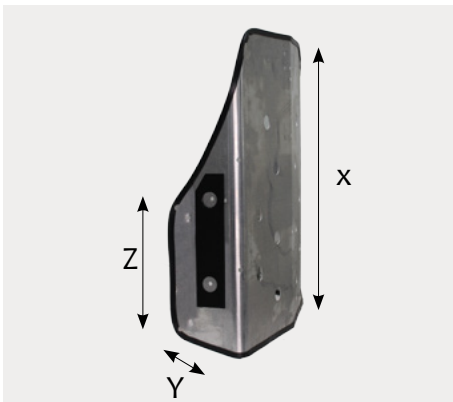
PART NUMBERS

Part Number: SUB(W X H)

Fill in width (W) and height (H) to get part number.

E.g. For a W = 15" and H = 17" Back; Part number would be SUB1517

RELAX



GENTLE SHELL LATERAL DIMENSIONS

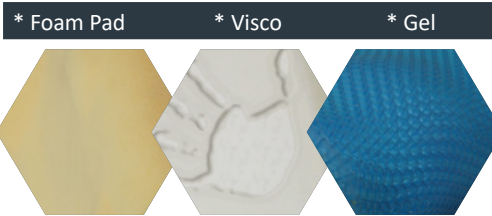
X = Standard shell height 18"
 Y= Lateral depth 3" finished
 Z= Lateral height 10"



BACK PIN POSITIONS ADJUSTABLE HOLES

Ability to reposition pin hardware back by 1" on the shell. Optional 1" longer pins to mount a smaller back on a wider chair

OVERLAYS



ADP: SEBND0015 SEBND0015 SEBND0020

* Up-charge items

KEY FEATURES

- Provides moderate midline support
- Comfortable High Resilience Foam
- 3 lbs. Aluminum, Light Weight Shell
- Pre Punched holes to mount headrest and laterals
- Adjustable/Removable Lumbar Support
- Easy to Install and Remove
- Height Adjustable
- Suited for freedom support



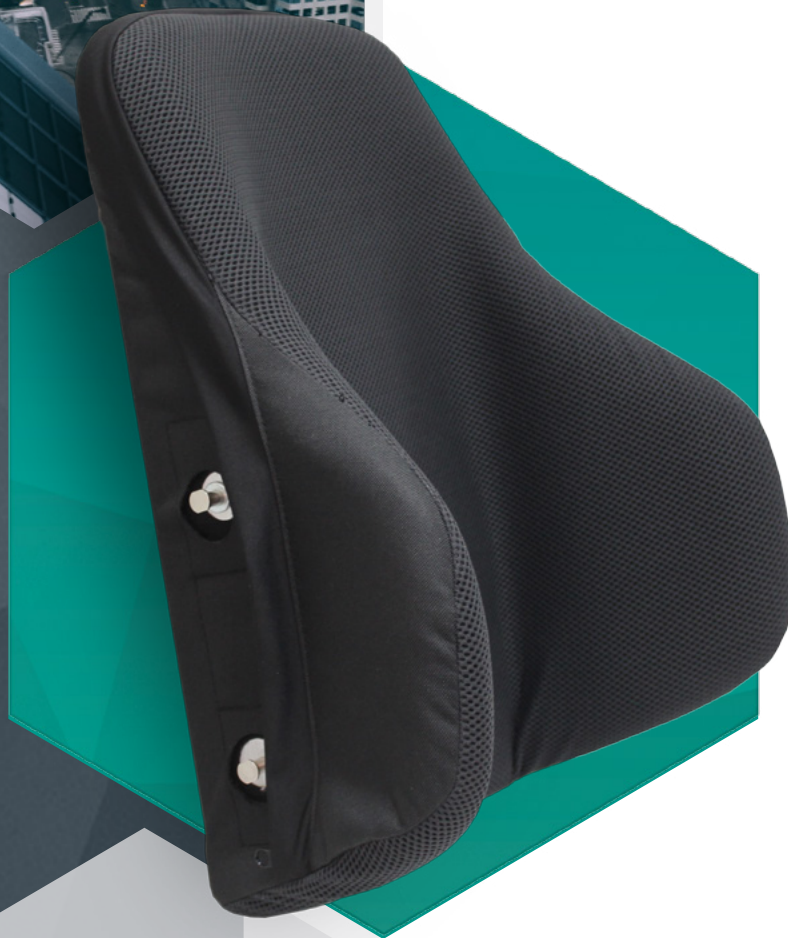
UNIVERSAL HARDWARE

Accommodates Pelvic rotation and will allow for full back support with 25° of posterior and 20° of anterior adjustability.

SPECIFICATIONS	RELAX SERIES - GENTLE FIT BACK
ADP	SEBWM0020, CUSTOM SEBWM0025
WIDTH RANGE	Unlimited
HEIGHT	Unlimited
AVAILABLE HARDWARE STYLES	One style which is universal to all our backs
ANGLE ADJUSTABLE	25° anterior adjustability, 20° of posterior adjustability
WIDTH ADJUSTABLE	2" of adjustability through the pins on the back
FITS TUBING SIZE	7/8" tubing or 1"
HEADREST MOUNT	Backs pre-drilled for headrest supports and lateral supports

RELAX

FULL FIT BACK



Rear Back Angle



Inner Foam and Incontinent Cover

The **Relax Full Fit** by Power Plus Mobility is designed to meet a variety of positioning needs. This is an aluminum light weight formed back with hardware that allows for multiple adjustments. The Relax Full Fit with its very aggressive laterals is suited for users needing complex postural support and spinal alignment.

Quick Reference Guide

RELAX SERIES - FULL FIT BACK

REGULAR SIZES ADP: SEBWM0010

Width = 14" to 18", 20" Part Number: Refer below

Height = 18"

CUSTOM SIZES ADP: SEBWM0015

Width = 13" or < and 19", 21" or > Part Number: Refer below

Height = are 17" or <, 19" or >

"<" means less and ">" means more

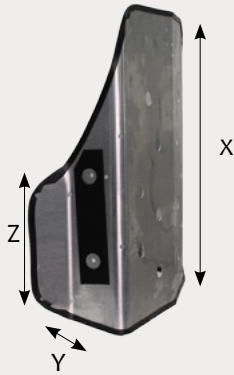
PART NUMBERS

Part Number: DU(W X H)

Fill in width (W) and height (H) to get part number.

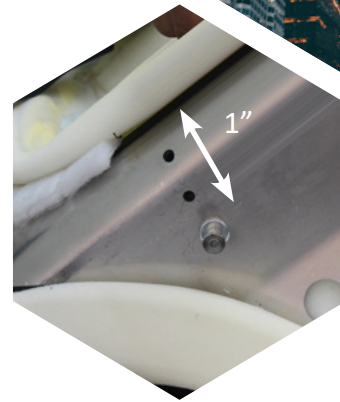
E.g. For a W = 15" and H = 17" Back; Part number would be DU1517

RELAX



FULL SHELL LATERAL DIMENSIONS

X = Standard shell height 18"
 Y = Lateral depth 5" finished
 Z = Lateral height 10"

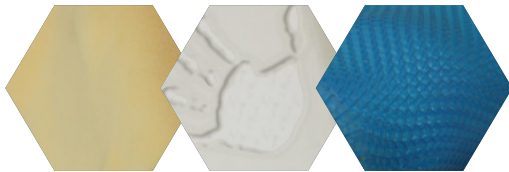


BACK PIN POSITIONS ADJUSTABLE HOLES

Ability to reposition pin hardware back by 1" on the shell. Optional 1" longer pins to mount a smaller back on a wider chair

OVERLAYS

* Foam Pad * Visco * Gel



ADP: SEBND0015 SEBND0015 SEBND0020

* Up-charge items



UNIVERSAL HARDWARE

Accommodates Pelvic rotation and will allow for full back support with 25 degrees of posterior and 20 degrees of anterior adjustability.

KEY FEATURES

- Provides aggressive laterals for complex posture support
- Comfortable High Resilience Foam
- 3 lbs. Aluminum, Light Weight Shell
- Pre Punched holes to mount headrest and laterals
- Adjustable/Removable Lumbar Support
- Easy to Install and Remove
- Height Adjustable

SPECIFICATIONS	RELAX SERIES - FULL FIT BACK
ADP	SEBWM0010, CUSTOM SEBWM0015
WIDTH RANGE	Unlimited
HEIGHT	Unlimited
AVAILABLE HARDWARE STYLES	One style which is universal to all our backs
ANGLE ADJUSTABLE	25° posterior adjustability, 20° of anterior adjustability
WIDTH ADJUSTABLE	2" of adjustability through the pins on the back
FITS TUBING SIZE	7/8" tubing or 1"
HEADREST MOUNT	Backs pre-drilled for headrest supports and lateral supports



Rear Back Angle



Inner Foam and Incontinent Cover

The **Relax Snug Fit** by Power Plus Mobility is designed to meet a variety of positioning needs. This is an aluminum light weight formed back with hardware that allows for multiple adjustments. The Relax Snug Fit with its open hip laterals is suited for users needing complex postural support and spinal alignment. Provides 7" of mid Thoracic support.

Quick Reference Guide

RELAX SERIES - SNUG FIT BACK

REGULAR SIZES ADP: [SEBWM0027](#)

Width = 16" - 18"

Part Number: Refer below

Height = 18"

CUSTOM ADP: WIDTH [SEBWM0035](#), HEIGHT [SEBWM0040](#)

Width = 15" or <, 19" or >

Part Number: Refer below

Height = 17" or <, 19" or >

"<" means less and ">" means more

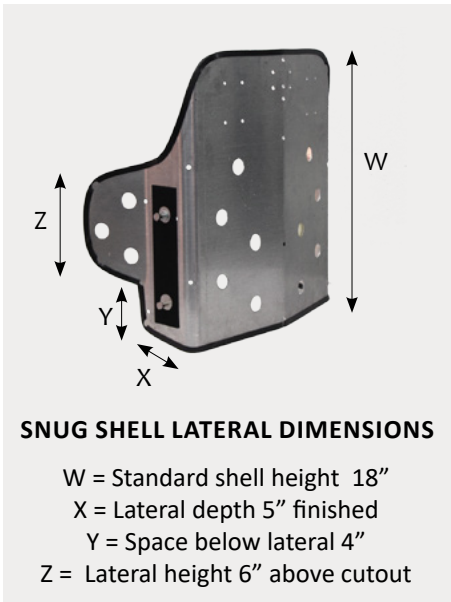
PART NUMBERS

Part Number: MDU(W X H)

Fill in width (W) and height (H) to get part number.

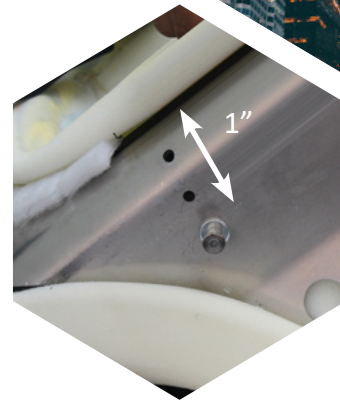
E.g. For a W = 15" and H = 17" Back; Part number would be MDU1517

RELAX



SNUG SHELL LATERAL DIMENSIONS

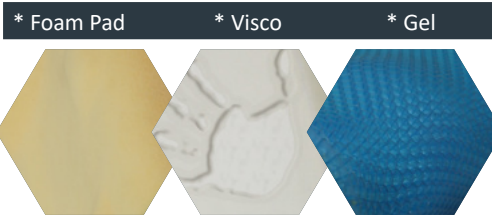
W = Standard shell height 18"
 X = Lateral depth 5" finished
 Y = Space below lateral 4"
 Z = Lateral height 6" above cutout



BACK PIN POSITIONS ADJUSTABLE HOLES

Ability to reposition pin hardware back by 1" on the shell. Optional 1" longer pins to mount a smaller back on a wider chair

OVERLAYS

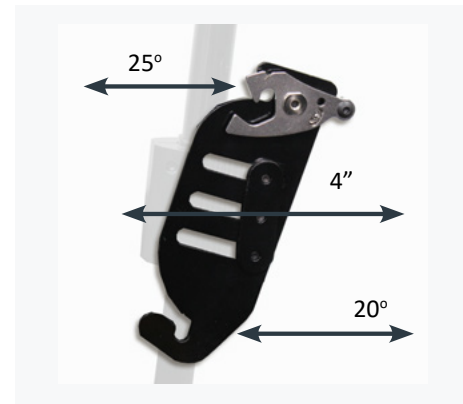


ADP: SEBND0015 SEBND0015 SEBND0020

* Up-charge items

KEY FEATURES

- Provides complex posterial support with open hip laterals
- Comfortable High Resilience Foam
- 3 lbs. Aluminum, Light Weight Shell
- Pre Punched holes to mount headrest and laterals
- Adjustable/Removable Lumbar Support
- Easy to Install and Remove
- Height Adjustable



UNIVERSAL HARDWARE

Accommodates Pelvic rotation and will allow for full back support with 25 degrees of posterior and 20 degrees of anterior adjustability.

SPECIFICATIONS	RELAX SERIES - SNUG FIT BACK
ADP	SEBWM0027, CUSTOM W SEBWM0035, H SEBWM0040
STANDARD WIDTH RANGE	16" - 18"
CUSTOM WIDTH RANGE	17" or less and 19" or more
STANDARD HEIGHT RANGE	18"
CUSTOM HEIGHT RANGE	17" or less and 19" or more
AVAILABLE HARDWARE STYLES	One style which is universal to all our backs
ANGLE ADJUSTABLE	25° anterior adjustability, 20° of posterior adjustability
WIDTH ADJUSTABLE	2" of adjustability through the pins on the back
FITS TUBING SIZE	7/8" tubing or 1"
HEADREST MOUNT	Backs pre-drilled for headrest supports and lateral supports

RELAX

FORM FIT BACK



Rear Back Angle



Removable Cube Foam

The **Relax Form Fit** is an aluminum light weight formed back with hardware that allows for multiple adjustments. The Relax Form Fit with its wide range of laterals is suited for complex seating and positioning needs. Cubes are removable to custom fit for spinal anomalies.

Quick Reference Guide

RELAX SERIES - FORM FIT BACK

REGULAR SIZES ADP: SEBWM0026

Width = 16" - 18"

Part Number: Refer below

Height = 18"

CUSTOM ADP: WIDTH SEBWM0035, HEIGHT SEBWM0040

Width = 15" or <, 19" or >

Part Number: Refer below

Height = 17" or <, 19" or >

"<" means less and ">" means more

PART NUMBERS

SHUF (W X H) **No Laterals**

SHUS (W X H) **Gentle Laterals**

SHUM (W X H) **Snug Laterals**

SHUD (W X H) **Full Laterals**

Fill in width (W) and height (H) to get part number.

E.g. For a W = 15" and H = 17" Back; Part number would be SHU1517

Poly Foam Cubes Part Numbers:

QUB2x2

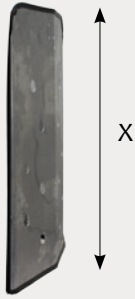
Poly Foam Cubes 2x2

QUB3x2

Poly Foam Cubes 3x2

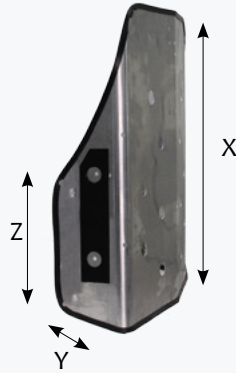
RELAX

RELAX FORM FIT COMES WITH THE FOLLOWING BACK SHELL OPTIONS



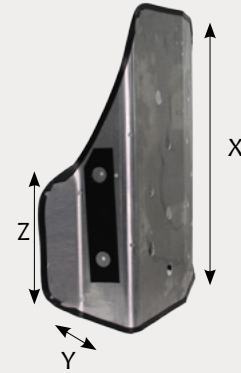
NO LATERAL DIMENSIONS

X = Standard shell height 18"



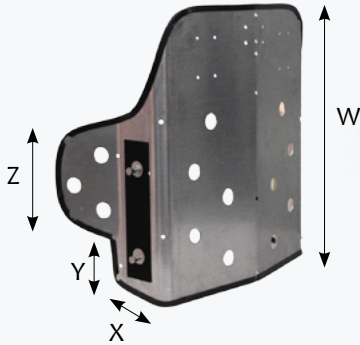
GENTLE SHELL LATERAL DIMENSIONS

X = Standard shell height 18"
Y = Lateral depth 3" finished
Z = Lateral height 10"



FULL SHELL LATERAL DIMENSIONS

X = Standard shell height 18"
Y = Lateral depth 5" finished
Z = Lateral height 10"



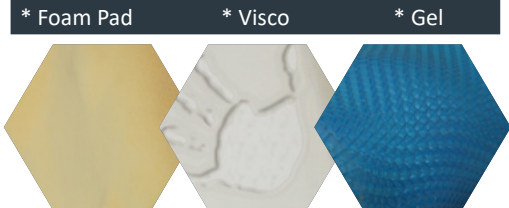
SNUG SHELL LATERAL DIMENSIONS

W = Standard shell height 18"
X = Lateral depth 5" finished
Y = Space below lateral 4"
Z = Lateral height 6" above cutout

KEY FEATURES

- Wide range of laterals with removable cubes for custom fit
- Comfortable High Resilience Foam
- 3 lbs. Aluminum, Light Weight Shell
- Pre Punched holes to mount headrest and laterals
- Adjustable/Removable Lumbar Support
- Easy to Install and Remove
- Height Adjustable

OVERLAYS



ADP: SEBND0015 SEBND0015 SEBND0020

* Up-charge items

SPECIFICATIONS	RELAX SERIES - FORM FIT BACK
ADP	SEBWM0026, CUSTOM W SEBWM0035, H SEBWM0040
STANDARD WIDTH RANGE	16" - 18"
CUSTOM WIDTH RANGE	15" or less and 19" or more
STANDARD HEIGHT RANGE	18"
CUSTOM HEIGHT RANGE	17" or less and 19" or more
AVAILABLE HARDWARE STYLES	One style which is universal to all our backs
ANGLE ADJUSTABLE	25° anterior adjustability, 20° of posterior adjustability
WIDTH ADJUSTABLE	2" of adjustability through the pins on the back
FITS TUBING SIZE	7/8" tubing or 1"
HEADREST MOUNT	Backs pre-drilled for headrest supports and lateral supports

RELAX

SPIRAL FIT BACK



Rear Back Angle



5 Points of Tension Adjustability

The **Relax Spiral Fit** by Power Plus Mobility is designed to meet a variety of positioning needs. This is an aluminum light weight formed back with hardware that allows for multiple adjustments. The Relax Spiral Fit with its wide range of laterals is suited for users needing complex postural support and spinal adjustments. Accommodates for curvature of the spine allowing for comfortable posterior pelvic tilt.

Quick reference guide

RELAX SERIES - SPIRAL FIT BACK

REGULAR SIZES ADP: SEBWM0030

Width = 16" - 18"

Part Number: Refer below

Height = 18"

CUSTOM ADP: WIDTH SEBWM0035, HEIGHT SEBWM0040

Width = 15" or <, 19" or >

Part Number: Refer below

Height = 17" or <, 19" or >

"<" means less and ">" means more

PART NUMBERS

KTBF (W X H) **No Laterals**

KTBS (W X H) **Gentle Laterals**

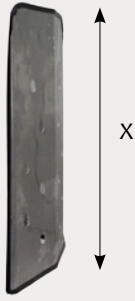
KTBM (W X H) **Snug Laterals**

KTBD (W X H) **Full Laterals**

E.g. For a W = 15" and H = 17" Back; Part number would be KTB1517

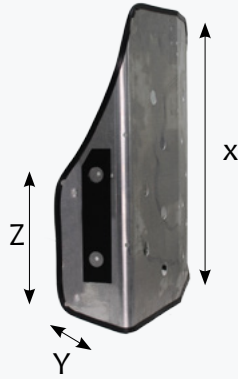
RELAX

RELAX SPIRAL FIT COMES WITH THE FOLLOWING BACK SHELL OPTIONS



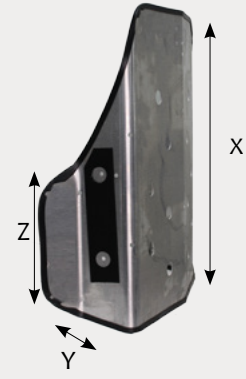
NO LATERAL DIMENSIONS

X = Standard shell height 18"



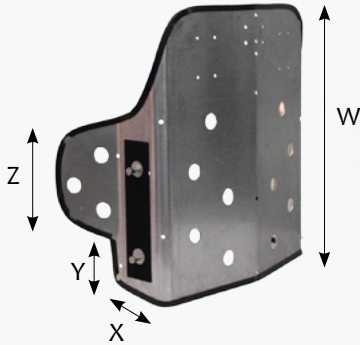
GENTLE SHELL LATERAL DIMENSIONS

X = Standard shell height 18"
Y = Lateral depth 3" finished
Z = Lateral height 10"



FULL SHELL LATERAL DIMENSIONS

X = Standard shell height 18"
Y = Lateral depth 5" finished
Z = Lateral height 10"



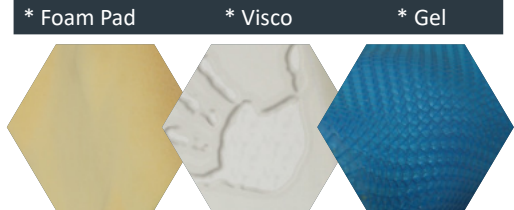
SNUG SHELL LATERAL DIMENSIONS

W = Standard shell height 18"
X = Lateral depth 5" finished
Y = Space below lateral 4"
Z = Lateral height 6" above cutout

KEY FEATURES

- Wide range of laterals with cutout that allows for curvature of the spine
- Comfortable High Resilience Foam
- 3lbs Aluminum, Light Weight Shell
- Pre Punched holes to mount headrest and laterals
- Adjustable/Removable Lumbar Support
- Easy to Install and Remove
- Height Adjustable

OVERLAYS



ADP: SEBND0015 SEBND0015 SEBND0020

* Up-charge items

SPECIFICATIONS	RELAX SERIES - SPIRAL FIT BACK
ADP	SEBWM0030 , CUSTOM W SEBWM0035 , H SEBWM0040
STANDARD WIDTH RANGE	16" - 18"
CUSTOM WIDTH RANGE	15" or less and 19" or more
STANDARD HEIGHT RANGE	18"
CUSTOM HEIGHT RANGE	17" or less and 19" or more
AVAILABLE HARDWARE STYLES	One style which is universal to all our backs
ANGLE ADJUSTABLE	25° anterior adjustability, 20° of posterior adjustability
WIDTH ADJUSTABLE	2" of adjustability through the pins on the back
FITS TUBING SIZE	7/8" tubing or 1"
HEADREST MOUNT	Backs pre-drilled for headrest supports and lateral supports

RELAX

SOFT CUSHION



Soft Cushion Layered

The **Relax Soft** is formed to create excellent comfort through a one piece open cell foam. The base is a firm ultra cell polyurethane foam that provides a solid foundation for your cushion. This cushion provides good support and pressure right through the pelvic and thigh areas.

Quick Reference Guide

RELAX SERIES - SOFT CUSHION

REGULAR SIZES ADP: **SESWM0050**

Width = 14" - 20"

Part Number: Refer below

Length = 14" - 20"

PART NUMBERS

Part Number: RS(W X L)

Fill in width (W) and length (L) to get part number.

E.g. For a W = 15 and L = 17 Cushion; Part number would be RS1517

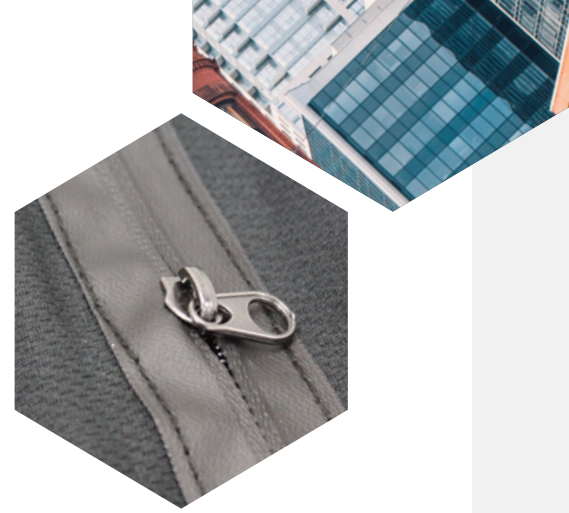
COVER OPTIONS

Part Number	Discription	ADP Codes
RS-COV	Standard Cover	SESND1050

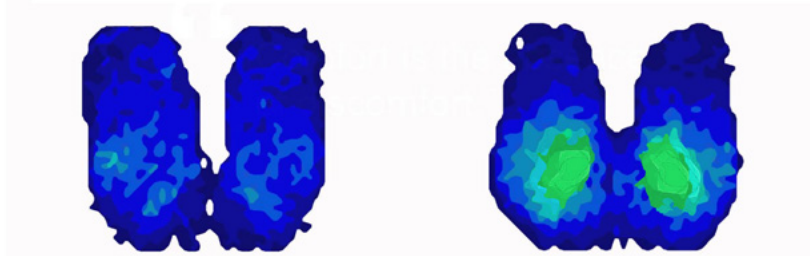
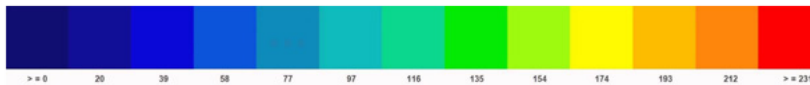
RELAX

WATERPROOF ZIPPER

Waterproof zipper seals in the cushion and prevents fluids from entering inside of the cover.



Pressure Reading Scale in mm-Hg



Pressure Map	Relax Soft
Duration	1 hr
Weight	125 lbs./57 Kg
Average Pressure	30 mm-Hg

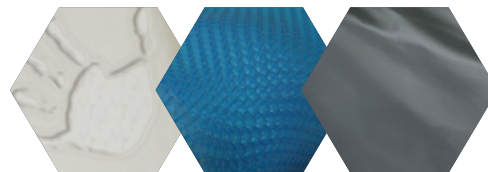
Pressure Map	Relax
Duration	1 hr
Weight	200 lbs./57 Kg
Average Pressure	30 mm-Hg

KEY FEATURES

- Superior pressure reduction for users
- Light weight cushion 2.3 lbs.
- Excellent contouring for positioning
- Water fall front for thigh support and comfort
- Adductor for comfort and proper thigh positioning
- Incontinent inner cover
- Easy clean, incontinent, four way stretch outer cover
- Waterproof zipper on standard cushions

OVERLAYS

* Foam Pad * Visco Incontinent



ADP: SEBND0015 SEBND0020

* Up-charge items

SPECIFICATIONS	RELAX SERIES - SOFT CUSHION
ADP	SESWM0050
PRODUCT WEIGHT	2.3 lbs. (16" - 20")
WIDTH	14" - 20"
DEPTH	14" - 20"
HEIGHT	2.5"
WEIGHT CAPACITY	250 lbs.

RELAX

COMFY CUSHION



Comfy Cushion Layered

The **Relax Comfy** provides even pressure distribution over weight bearing surfaces. For individuals with progressive postural change the Comfy cushion will allow for even pressure relief. The waterfall front edge of the cushion will accommodate foot propulsion or tight hamstrings. An increased open pelvic support area allows for greater distribution of pressure and greater pelvic support.

Quick Reference Guide

RELAX SERIES - COMFY CUSHION

REGULAR SIZES ADP: **SESWM0030**

Width = 14" - 20"

Part Number: Refer below

Length = 14" - 20"

PART NUMBERS

Part Number: RC(W X L)

Fill in width (W) and length (L) to get part number.

E.g. For a W = 15 and L = 17 Cushion; Part number would be RC1517

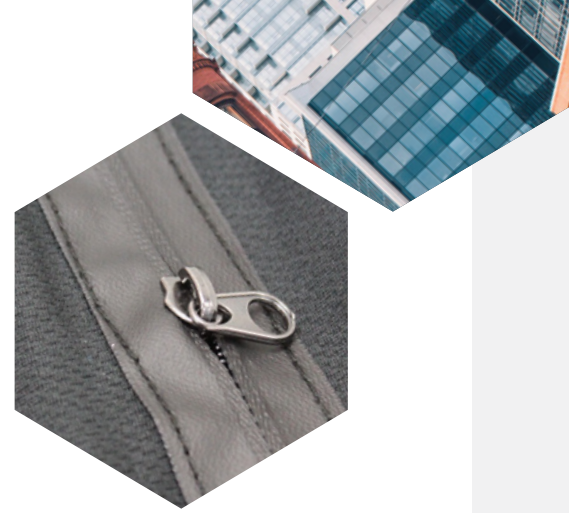
COVER OPTIONS

Part Number	Discription	ADP Codes
RC-COV	Standard Cover	SESND1050

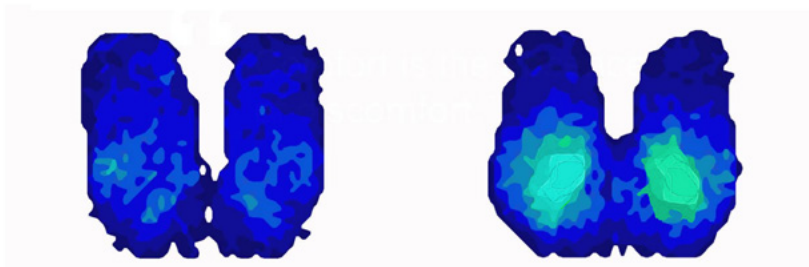
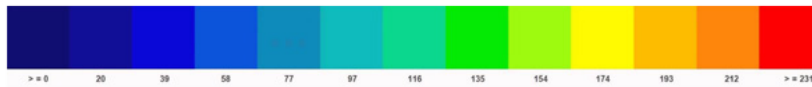
RELAX

WATERPROOF ZIPPER

Waterproof zipper seals in the cushion and prevents fluids from entering inside of the cover.



Pressure Reading Scale in mm-Hg



Pressure Map	Relax Comfy
Duration	1 hr
Weight	125 lbs./57 Kg
Average Pressure	30 mm-Hg

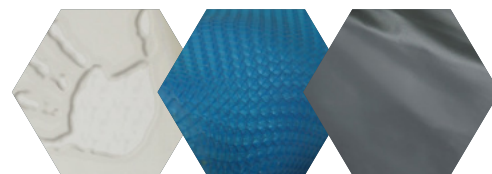
Pressure Map	Relax Comfy
Duration	1 hr
Weight	200 lbs./57 Kg
Average Pressure	30 mm-Hg

KEY FEATURES

- Multiple layers of foam density allows for comfortable pelvic support and pressure relief
- Water Fall Front for Thigh Support and Comfort
- Abductor for Comfort and Proper Thigh Positioning
- Incontinent Inner Cover
- Easy Clean, Incontinent, Four Way Stretch Outer Cover

OVERLAYS

* Foam Pad * Visco Incontinent



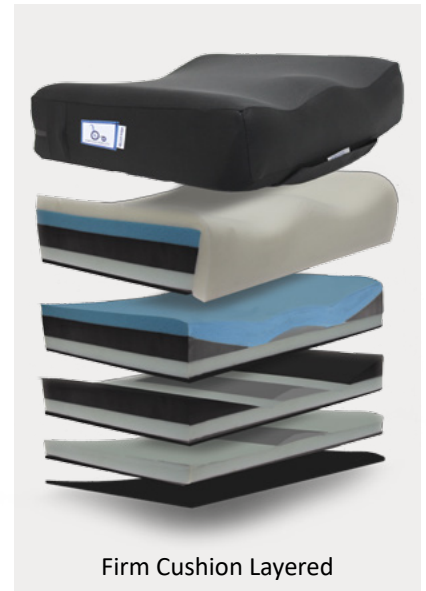
ADP: SEBND0015 SEBND0020

* Up-charge items

SPECIFICATIONS	RELAX SERIES - COMFY CUSHION
ADP	SESWM0030
PRODUCT WEIGHT	3.5 lbs. (16" x 18")
WIDTH	14" - 20"
DEPTH	14" - 20"
HEIGHT	3.5"
WEIGHT CAPACITY	250 lbs.

RELAX

FIRM CUSHION



Firm Cushion Layered

The **Relax Firm** Cushion provides integrated wedges within the cushion will allow for a off-loading effect from the Ischial Tuberosities onto the lateral shelf. The waterfall front edge of the cushion will accommodate foot propulsion or tight hamstrings. An increased open pelvic support area allows for greater distribution of pressure and greater pelvic support

Quick Reference Guide

RELAX SERIES - FIRM CUSHION

ADP: **SESWM0040**

Width = 18" and up

Part Number: Refer below

Length = 18" and up

PART NUMBERS

Part Number: RF(W X L)

Fill in width (W) and length (L) to get part number.

E.g. For a W = 15 and L = 17 Cushion; Part number would be RF1517

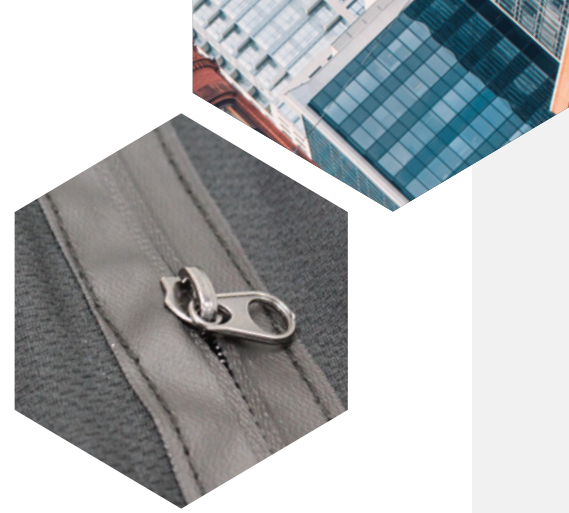
COVER OPTIONS

Part Number	Discription	ADP Codes
RF-BCOV	Bariatric Cover	SESND1060

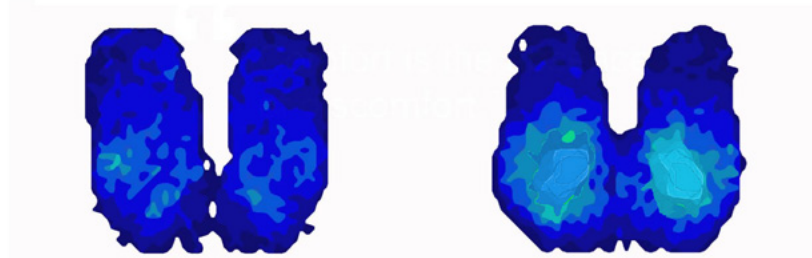
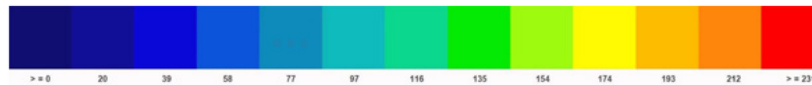
RELAX

WATERPROOF ZIPPER

Waterproof zipper seals in the cushion and prevents fluids from entering inside of the cover.



Pressure Reading Scale in mm-Hg



Pressure Map	Relax Firm
Duration	1 hr
Weight	125 lbs./57 Kg
Average Pressure	30 mm-Hg

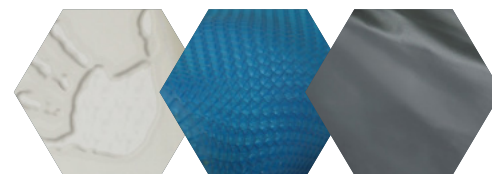
Pressure Map	Relax Firm
Duration	1 hr
Weight	200 lbs./57 Kg
Average Pressure	30 mm-Hg

KEY FEATURES

- Integrated wedges to help offloading
- Multiple layers of foam density allows for comfortable pelvic support and pressure relief
- Water Fall Front for Thigh Support and Comfort
- Abductor for Comfort and Proper Thigh Positioning
- Incontinent Inner Cover
- Superior Pressure Reduction for Bariatric Users
- Easy Clean, Incontinent, Four Way Stretch Outer Cover

OVERLAYS

* Foam Pad * Visco Incontinent



ADP: SEBND0015 SEBND0020

* Up-charge items

SPECIFICATIONS	RELAX SERIES - FIRM CUSHION
ADP	SESWM0040
PRODUCT WEIGHT	4 lbs. (16" x 18")
WIDTH	18" and Up
DEPTH	18" and Up
HEIGHT	3.75"
WEIGHT CAPACITY	Up to 600 lbs.

FIRM CUSHION

RELAX

CUSHIONS

RELAX

HEADREST



Contoured Headrest
Diagram 1



Multi Axis Headrest
Diagram 2



Complex Headrest
Diagram 3



Vertical Horizontal Headrest
Diagram 4



Universal Headrest Hardware
Diagram 5



Standard Headrest Hardware
Diagram 6

Quick Reference Guide

Accessories - Headrests and Hardware

Part Number	Description	Dia	Product ADP Code
UPHT218	Standard Vertical Horizontal Headrest Assembly (1/2" Tubing)	4	SEHWM0005
UPHT217	Standard Vertical Horizontal Headrest Assembly (3/4" Tubing)	4	SEHWM0005
UPHT221	Fabricated Contoured Headrest (Pad Only)	1	SEHCF050L
MAHG	Gooseneck Multi-Axis	2	SEHND0010
COMHA	Complex Headrest (Pad Only)		SEHCF060L
HRV1-2	Vertical/Horizontal Hardware 1/2" Tubing (No Pad)	3	SEHND0005
HRV3-4	Vertical/Horizontal Hardware 3/4" Tubing (No Pad)	4	SEHND0005
UHRA	Universal Headrest Hardware	5	SEHND0020
MAHP	Mounting Plate	6	SEHND0020
MAHF	Multi Axis Headrest Fabricated Complete	2,6	SEHCF050L, SEHND0010 SEHND0020
MAHFX	Multi Axis Flex Headrest Fabricated Complete	2,6	SEHCF060L, SEHND0010 SEHND0020

RELAX



Tapered Lateral Left
Diagram 1



Pommel
Diagram 3



Adductor Adjustable
Diagram 2

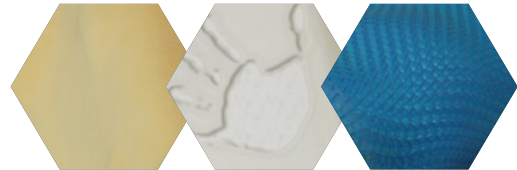


OVERLAYS

* Foam Pad

* Visco

* Gel



* Up-charge items

Quick Reference Guide

Accessories - Lateral and Adductors

Part Number	Description	Dia	Product ADP Code
EXP2-P	Extra Padding (2)		SEMCF651L
HFP-P	Hardware For Pommel	3	SEICF401L
ADD8-P	Small Adductor 8" Adjustable 4 Piece Removable	2	SELND0005
ADD10-P	Medium Adductor 10" Adjustable 4 Piece Removable	2	SELND0005
ADD12-P	Large Adductor 12" - Adjustable 4 Piece Removable	2	SELND0005
ADDC-P	Custom Adductor	2	SEMCF702L
LATB	Tapered Laterals C/W Bite Out	1	SELND0015
LATBL-P	Tapered Laterals C/W Bite Out C/W Hardware - Left	1	SELND0015
LATBR-P	Tapered Laterals C/W Bite Out C/W Hardware - Right	1	SELND0015
LATMHL-P	Lateral Mounting Hardware Complete Left	1	SEICF201L
LATMHR-P	Lateral Mounting Hardware Complete Right	1	SEICF201L



RELAX

ARM SUPPORTS



Trough Arm Support System
Diagram 1-3



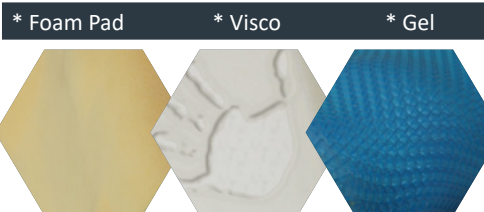
Pommel
Diagram 3



Adductor Adjustable
Diagram 2



OVERLAYS



* Up-charge items

Quick Reference Guide

Accessories - Arm Supports			
Part Number	Description	Dia	Product ADP Code
PRF-P	Pressure Relief Foam	5	SEAND0035
PRG-P	Pressure Relief Gel	4	SEAND0035
UPHA555-P	Extra Wide Arm Pad	6	SEAND0010
ELB-P	Elbow Block Left (4)	7	SETND0030
REB-P	Elbow Block Right (4)	7	SETND0030
CEB-P	Custom Elbow Blocks (2)	2	SEMCF305L
MAS	Modular Arm Support		SEAND0005
CHPP-R	Trough Arm Support System Right	1-3	SETND0030, SEMCF305L, SEAND0035
CHPP-L	Trough Arm Support System Left	1-3	SETND0030, SEMCF305L, SEAND0035
LHB	Left Hand Block	3	SETND0030
RHB	Right Hand Block	3	SETND0030
CHB	Custom Hand Block	3	SEMCF305L

RELAX



Full Tray Padded
Diagram 1



Full Tray Non Padded
Diagram 2



Full Tray Clear Non Padded
Diagram 3



Half Tray Padded
Diagram 4



Half Tray Non Padded
Diagram 5



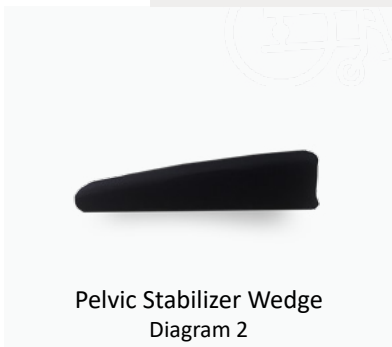
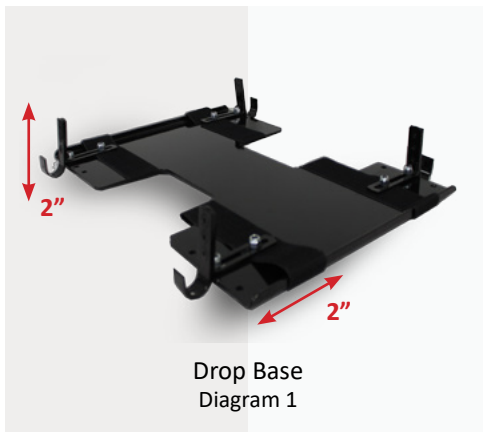
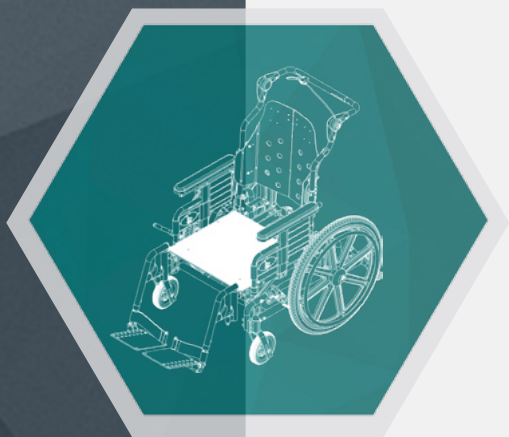
Half Tray Clear Non Padded
Diagram 6

Quick Reference Guide

Accessories - Lap Trays

Part Number	Description	Dia	Product ADP Code
ACC010	Full Tray Padded	1	SETND0005 & SETND0035
ACC011	Full Tray Clear Non Padded	3	SETND0005
ACC012	Full Tray Non Padded (ABS)	2	SETND0005
ACC012C	Full Tray Non Padded Custom	2	SETND0010
ACC013	Right Half Tray Padded	4	SETND0015 & SETND0035
ACC013C	Right Half Tray Non Padded Custom	5	SETND0020
ACC014	Left Half Tray Padded	4	SETND0015 & SETND0035
ACC014C	Left Half Tray Non Padded Custom	6	SETND0020
ACC015	Right Half Tray Clear	5	SETND0015
ACC016	Left Half Tray Clear	5	SETND0015
ACCP	Padding For Trays		SETND0035
VEPR	Velcro Elbow Pad Right		SETND0035
VEPL	Velcro Elbow Pad Left		SETND0035

* Note: All laptrays come standard with brackets



RELAX

Quick Reference Guide

Accessories - Dropbase and Rigidizer

Part Number	Description	Dia	Product ADP Code
SDB	Drop Base	1	SESND1020
PSW	Pelvic Stabilizer Wedge	2	SEMCF204L
SSI	Solid Seat Insert	3	SESND1015
SSP	Solid Seat Pocket		SESND1015
UPHT207	Solid Seat Base Upto 18" Wide	3	
UPHT208	Solid Seat Basse Over 18" Wide	3	



4 Point Padded Seat Belt
Diagram 1



2 Point Padded Seat Belt
Diagram 2



Seat Belt Padded Cover
Diagram 3



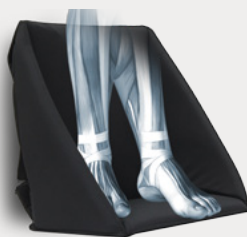
Quick Reference Guide

Accessories - Positioning Belts

Part Number	Description	Dia	Product ADP Code
UPHA504	4 Point Padded Seat Belt (2)	1	SERND0020
UPHA503	2 Point Padded Seat Belt (6)	2	SERND0030
SBSCPAD	Seat Belt Padded Cover	3	N/A
CHSTRP	Chest Strap		SERND0001
SBA	Auto Style Seat Belt		N/A
SBB	Velcro Style Seat Belt		N/A
SBC	Plastic Style Seat Belt		N/A

RELAX

FOOT/LEG OPTIONS



Two Piece Foot Box
Diagram 1



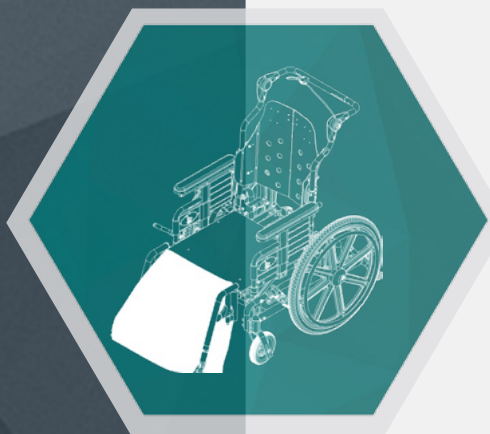
One Piece Foot Box
Diagram 2



Foot Pocket Not Padded
Diagram 3



One Piece Double Foot Box Not Padded
Diagram 4



OVERLAYS

* Foam Pad * Visco * Gel

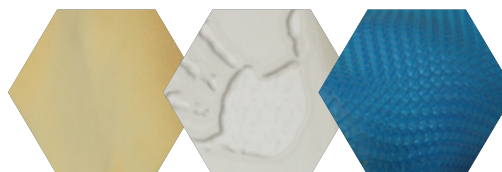


Diagram 5 * Up-charge items

Quick Reference Guide

Accessories - Foot/Leg Options

Part Number	Description	Dia	Product ADP Code
EP-P	Gel/Foam Extra Padding (2)	5	SEFND0035
FDP-PC	Footrest Discrepancy (2)		SEMCF801L
ASP-P	Amputee Support		SEFND0005
NLS	Calf Panel	3	SEFND0010
CSL	Foot Box 1 Or 2 Piece (2)	1, 2	SEFND0020
CFR-P	Complex Foot Rest		SEFCF102L
FPNP-P	Foot Pocket Not Padded (2)		SEFCF106L
CSLPB-P	1 Piece Double Footbox Not Padded	4	SEFCF103L
PAF	Angle Adjustable Footplates (Pair)		WAMJ
FRHC-P	Footrest Hanger Covers (Pair)		SEMCF803L
CCP	Custom Calf Pad (2)		SEFCF107L

RELAX

RELAX TENSION BACK UPHOLSTERY

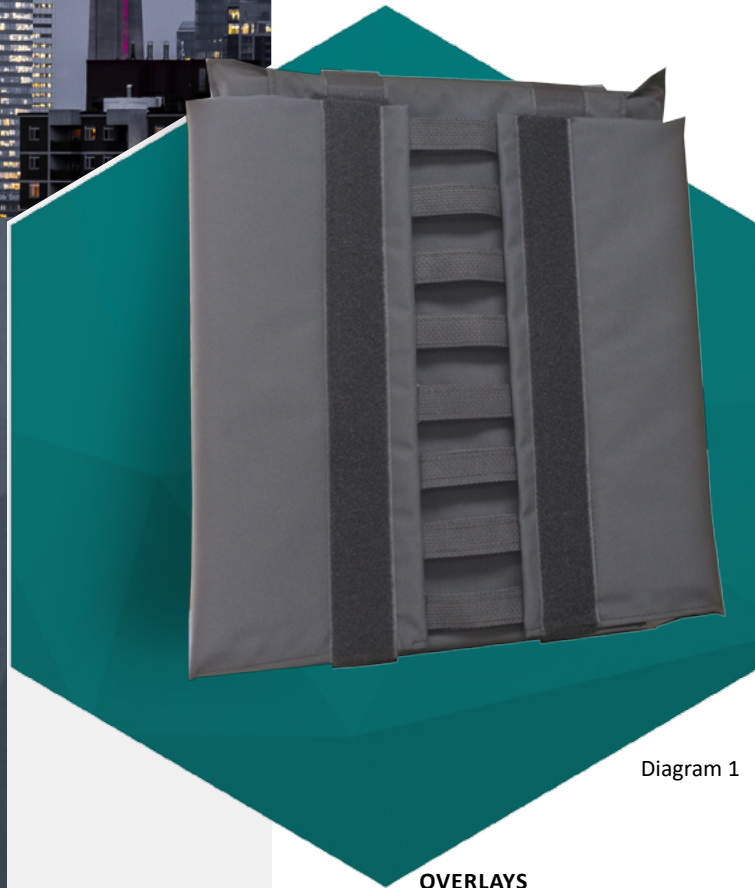


Diagram 1

Our Tension Back Upholstery provides trunk support and positioning needs. The Nylon is designed to be removed for machine washing. Additional overlays can be added such as Poyl Foam, Visco Foam or Gel.

OVERLAYS

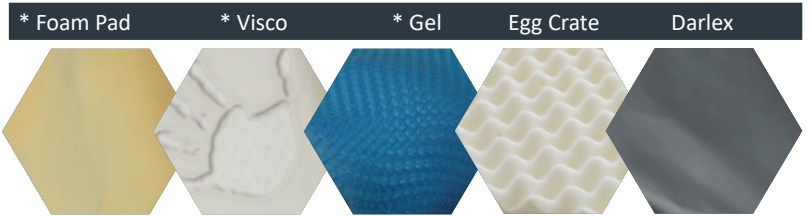


Diagram 2, 3, 4, 5 and 6 * Up-charge items

Quick Reference Guide			
Accessories - Tension Back Upholstery			
Part Number	Description	Dia	Product ADP Code
TAB	Tension Back Upholstery Nylon 18" or Less	1	WAMD
TABC	Tension Back Upholstery Custom Nylon 19" or Greater	1	WAME
TABD	Tension Back Upholstery Darlex 18" or Less	6	WAMD
TABCD	Tension Back Upholstery Custom Darlex 19" or Greater	6	WAME
TABE	Tension Back Upholstery Egg Crate 18" or Less	5	WAMD & SEBND0015
TABCE	Tension Back Upholstery Custom Egg Crate 19" or Greater	5	WAME & SEBND0015
TABG	Tension Back Upholstery Gel 18" or Less	4	WAMD & SEBND0020
TABCG	Tension Back Upholstery Custom Gel 19" or Greater	4	WAME & SEBND0020
PRG-P	Additional Pressure Relief Gel (6)	4	SEBND0020
PRF-P	Additional Pressure Relief Foam (6)	2,3	SEBND0015

RELAX

POWER PLUS MOBILITY

ACCESSORIES



Drop Base
Diagram 1



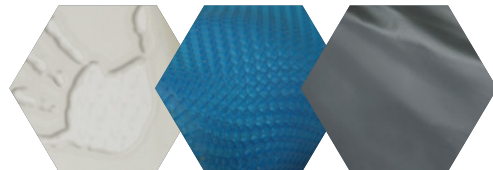
Pelvic Stabilizer Wedge
Diagram 2



Adductor Adjustable
Diagram 3

OVERLAYS

* Foam Pad * Visco Incontinent



* Up-charge items

Quick Reference Guide

Accessories - Seat Positioning Devices

Part Number	Description	Dia	Product ADP Code
CLC1	No Pommel Legrest Channel – Standard 20" or Less	3	SESND1035
CLC1-C	No Pommel Legrest Channel – Custom 21" or Greater	3	SEMCF209L
CLC2	Tapered Contour Legrest Channel – Standard 20" or Less	2	SESND1035
CLC2-C	Tapered Contour Legrest Channel – Custom 21" or Greater	2	SEMCF209L
CLC3	Squared Contour Legrest Channel – Standard 20" or Less	1	SESND1035
CLC3-C	Squared Contour Legrest Channel – Custom 21" or Greater	1	SEMCF209L

RELAX

CUSTOMIZE ANYTHING

CUSTOMIZE



SIMPLE CUSTIMZING PROCESS

1. CUSTOM CLIENT REQUEST
2. ORDER PLACEMENT
3. MANUFACTURING
4. FINAL PRODUCT

Power Plus Mobility own advance machinery specializes in manufacturing custom parts for customers specification from either a drawing or a sample part. The parts we manufacture could be simple or more complex and can be manufactured in small or large quantities. Contact your local sales representative with your specifications.

CUSTOMIZE
ANYTHING!

CUSTOM

Notes

A series of horizontal lines for taking notes, alternating between light gray and white background colors.

Notes

A large rectangular area with a light gray background and horizontal white lines, intended for taking notes.

SEATING BOOKLET

S I T B A C K A N D R E L A X

OUR PROMISE

With the assembly of our products done in Canada, as well as the years of experience through the interaction with our customers, we promise and plan on continually learning new ways to make their lives better.



PP-SBSBAR18 R2



POWERPLUSMOBILITY.COM

208 WILKINSON ROAD | BRAMPTON, ON | CANADA L6T 4M4
TELEPHONE (905)-614-0333 | TOLL FREE 1-(855)-614-0333
FAX (905)-614-0435