

RELAX

SOFT CUSHION



Soft Cushion Layered

The **Relax Soft** is formed to create excellent comfort through a one piece open cell foam. The base is a firm ultra cell polyurethane foam that provides a solid foundation for your cushion. This cushion provides good support and pressure right through the pelvic and thigh areas.

Quick Reference Guide

RELAX SERIES - SOFT CUSHION

REGULAR SIZES ADP: **SESWM0050**

Width = 14" - 20"

Part Number: Refer below

Length = 14" - 20"

PART NUMBERS

Part Number: RS(W X L)

Fill in width (W) and length (L) to get part number.

E.g. For a W = 15 and L = 17 Cushion; Part number would be RS1517

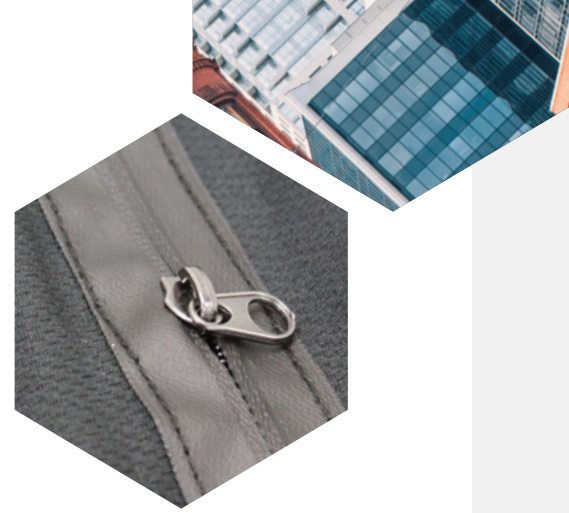
COVER OPTIONS

Part Number	Discription	ADP Codes
RS-COV	Standard Cover	SESND1050

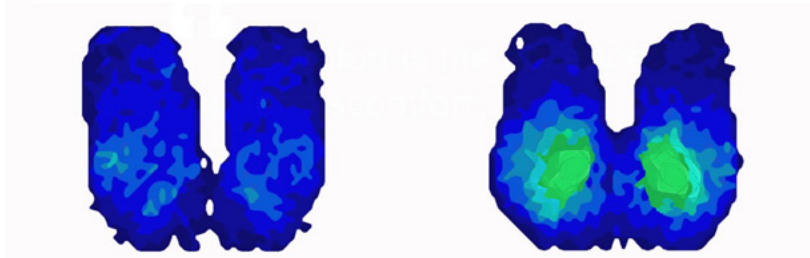
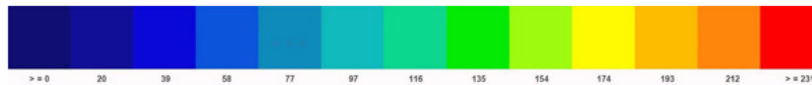
RELAX

WATERPROOF ZIPPER

Waterproof zipper seals in the cushion and prevents fluids from entering inside of the cover.



Pressure Reading Scale in mm-Hg



Pressure Map	Relax Soft
Duration	1 hr
Weight	125 lbs./57 Kg
Average Pressure	30 mm-Hg

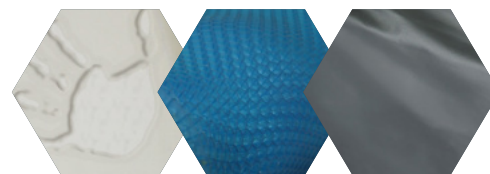
Pressure Map	Relax Soft
Duration	1 hr
Weight	200 lbs./57 Kg
Average Pressure	30 mm-Hg

KEY FEATURES

- Superior pressure reduction for users
- Light weight cushion 2.3 lbs.
- Excellent contouring for positioning
- Water fall front for thigh support and comfort
- Adductor for comfort and proper thigh positioning
- Incontinent inner cover
- Easy clean, incontinent, four way stretch outer cover
- Waterproof zipper on standard cushions

OVERLAYS

* Foam Pad * Visco Incontinent



ADP: SEBND0015 SEBND0020

* Up-charge items

SPECIFICATIONS	RELAX SERIES - SOFT CUSHION
ADP	SESWM0050
PRODUCT WEIGHT	2.3 lbs. (16" - 20")
WIDTH	14" - 20"
DEPTH	14" - 20"
HEIGHT	2.5"
WEIGHT CAPACITY	250 lbs.

SOFT CUSHION

RELAX

CUSHIONS